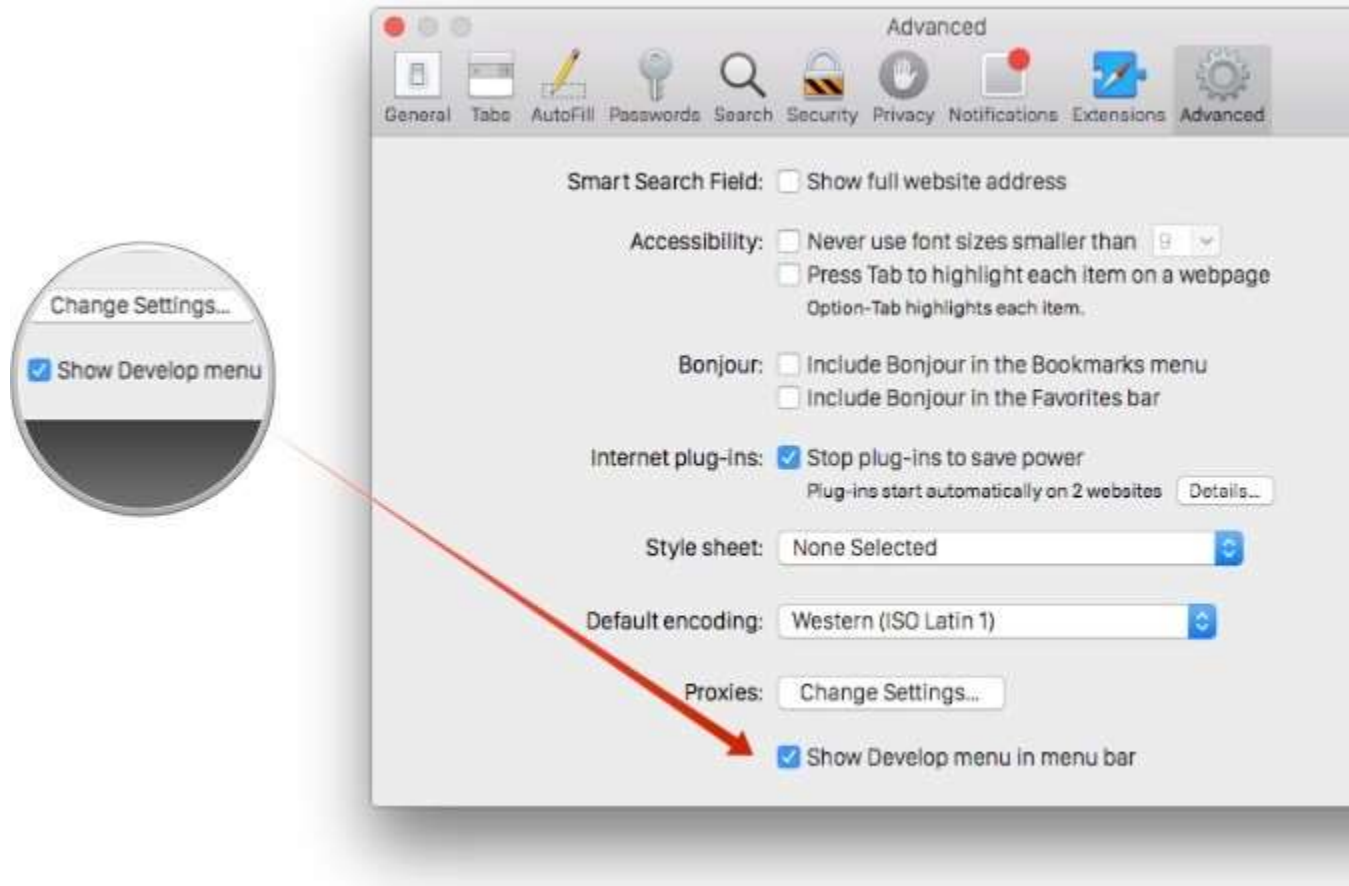


How to access websites that require a PC or Internet Explorer

1. Open Safari and navigate to Safari > Preferences from the menu bar.
2. Click on the Advanced tab.
3. Check the "Show Develop menu in menu bar" setting. The Develop menu should now show in your menu bar.



4. Go to the Menu Options Develop > User Agent.
5. If you need to pretend you're using Internet Explorer, choose the Internet Explorer 7 options.
6. Once checked go to advantage.oakland.k12.mi.us
7. Login
8. Select continue at the message that is is not a supported browser screen
9. The ESS window may go behind the current window so please look for the ESS screen.